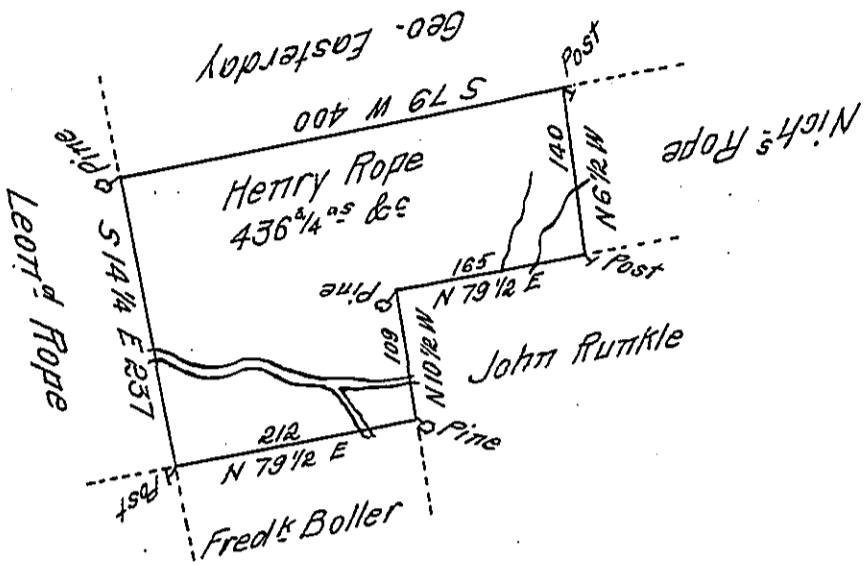


Sug. Loaf -
Luzerne.



A Draft of a tract of land Called _____ Situate on Black Creek in the
 County of Northum^{er} containing four Hundred & thirty Six acres ^{3/4} & Allow^{ed} Surv^{er}
 to Henry Rope the 5th Day of October 1793 by Virtue of a Warrant dated the
 13th day of June 1793.

To Daniel Brodhead Esq. } By W^m Gray D.S.
 Surv^r Genl }

IN TESTIMONY that the above is a copy of the original remaining on file in
 the Department of Internal Affairs of Pennsylvania, made
 conformably to an Act of Assembly approved the 16th day of
 February, 1833, I have hereunto set my Hand and caused
 the Seal of said Department to be affixed at Harrisburg,
 this thirtieth day of January 1912

Henry Houch
 Secretary of Internal Affairs.